

KENMORE-TOWN OF TONAWANDA
UNION FREE SCHOOL DISTRICT

OFFICE OF INSTRUCTION REPORT

BOARD OF EDUCATION MEETING
NOVEMBER 15, 2016

We educate, prepare, and inspire all students to achieve their highest potential.



Five Areas of Inquiry

1. History of the Selection of the Modules
2. Student Outcomes Pre/Post Modules
3. Timing of Communication
4. Practicality of Module Customization
5. What Other Districts are Doing

First Area of Inquiry

History of the Selection of the Modules



Selection of the Modules

2010/11

- NYS Adopts the CCLS
- Ken/Ton begins sending Teacher Leaders to NTI training in Albany to learn about the CCLS

2011/12

- Teacher leaders continue NTI training in Albany
- PD on the CCLS provided by District/CLSs on opening days and throughout LASW days
- Staff Development Center offered PD on CCLS

2012/13

- NYSED identifies Ken/Ton as a "Focus District" for low graduation rate for subgroup population
- KE and KW selected by Ken/Ton as Focus Schools
- Required DTSDE trainings in Albany
- Formulation of DCIP and SCEP plans
- School Review of KW in April 2013

2013/14

- ELA modules are piloted in several classrooms 6-8
- In June, KTA and Admin communicate jointly on the selection of the ELA modules as curriculum for 14-15 for grades 3-5
- Elementary Math Committee recommends piloting the Math modules in grades 3-5 for 2014-15 [9 teachers participate]
- First administration of CC Regents in ELA & Algebra 1

2014/15

- FIRST YEAR** implementation of ELA modules as curriculum for grades 3-8
- Administration communicates the selection of the math modules as curriculum for grades 6-8 beginning October 2014
- First administration of CC Geometry Regents

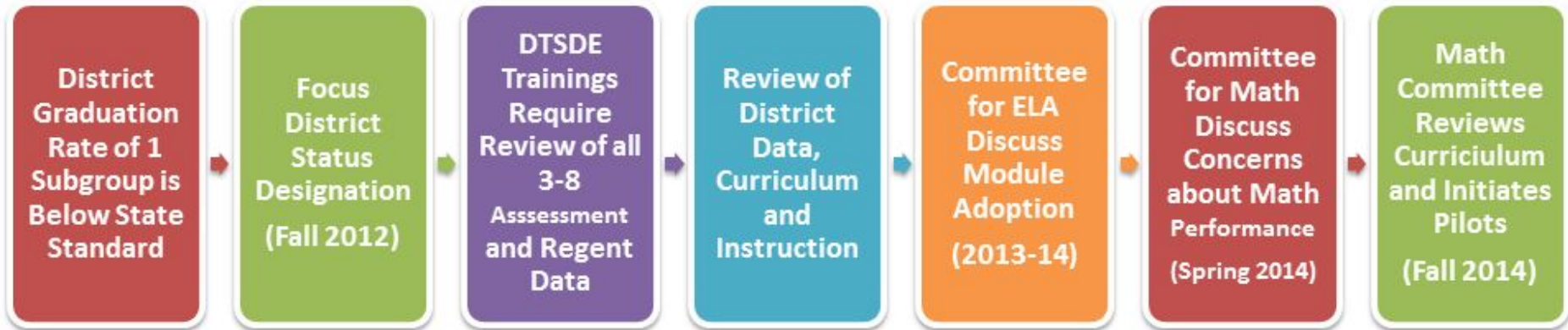
2015/16

- SECOND YEAR** implementation of ELA modules 3-8
- MS ELA module revisions approved and executed
- FIRST YEAR** implementation of Math modules 3-5
- SECOND YEAR** implementation of Math modules 6-8
- All Ken/Ton schools and district are removed from the "Focus" list; identified as "In Good Standing"
- First administration of CC Regents Algebra 2

2016/17

- THIRD YEAR** implementation of ELA modules 3-8
- On-site training for grade level teams (gr 3-5) for ELA modules
- October memo making ELA modules optional
- SECOND YEAR** implementation of Math modules 3-5
- THIRD YEAR** implementation of Math modules 6-8
- Math COII Project revises K-5 math module assessments

Focus District Status

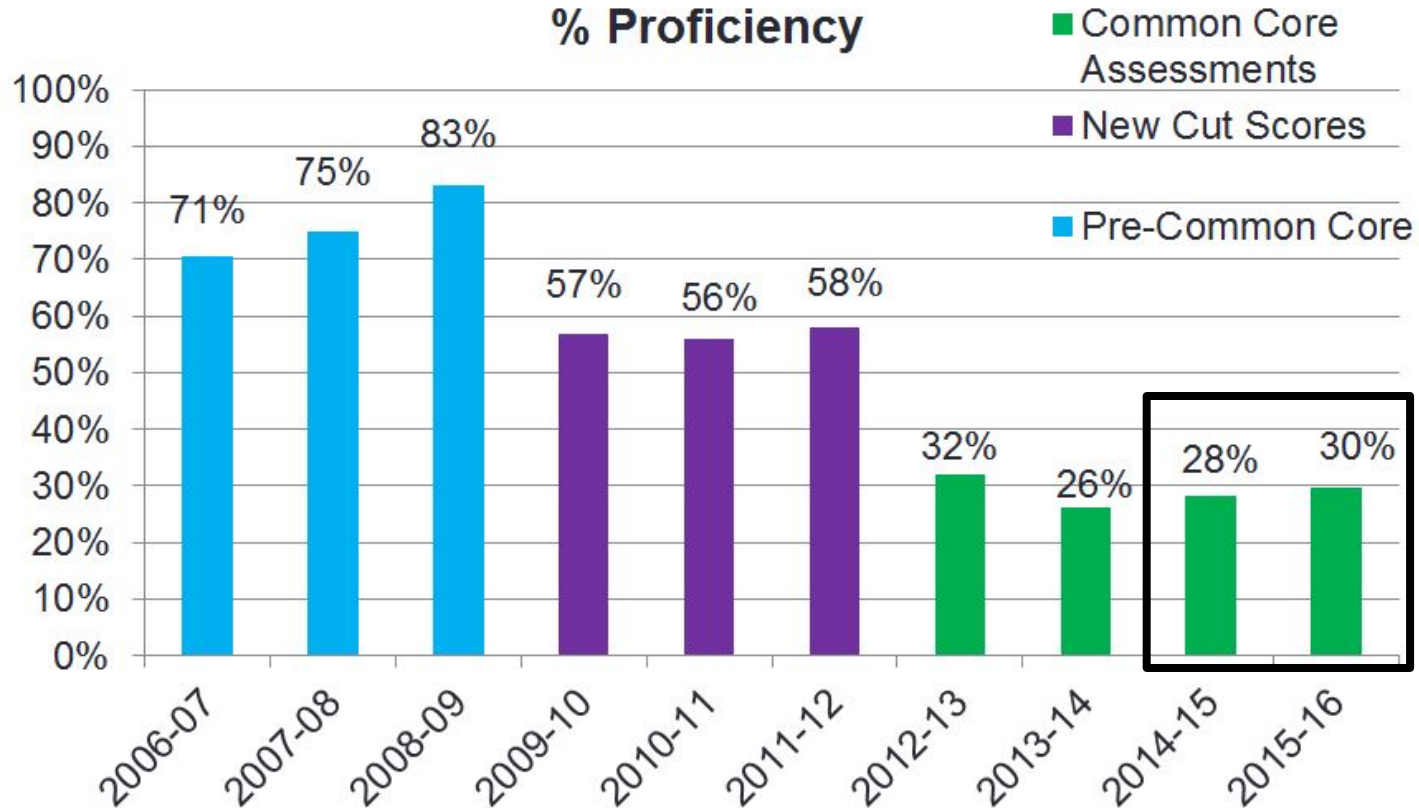


Second Area of Inquiry

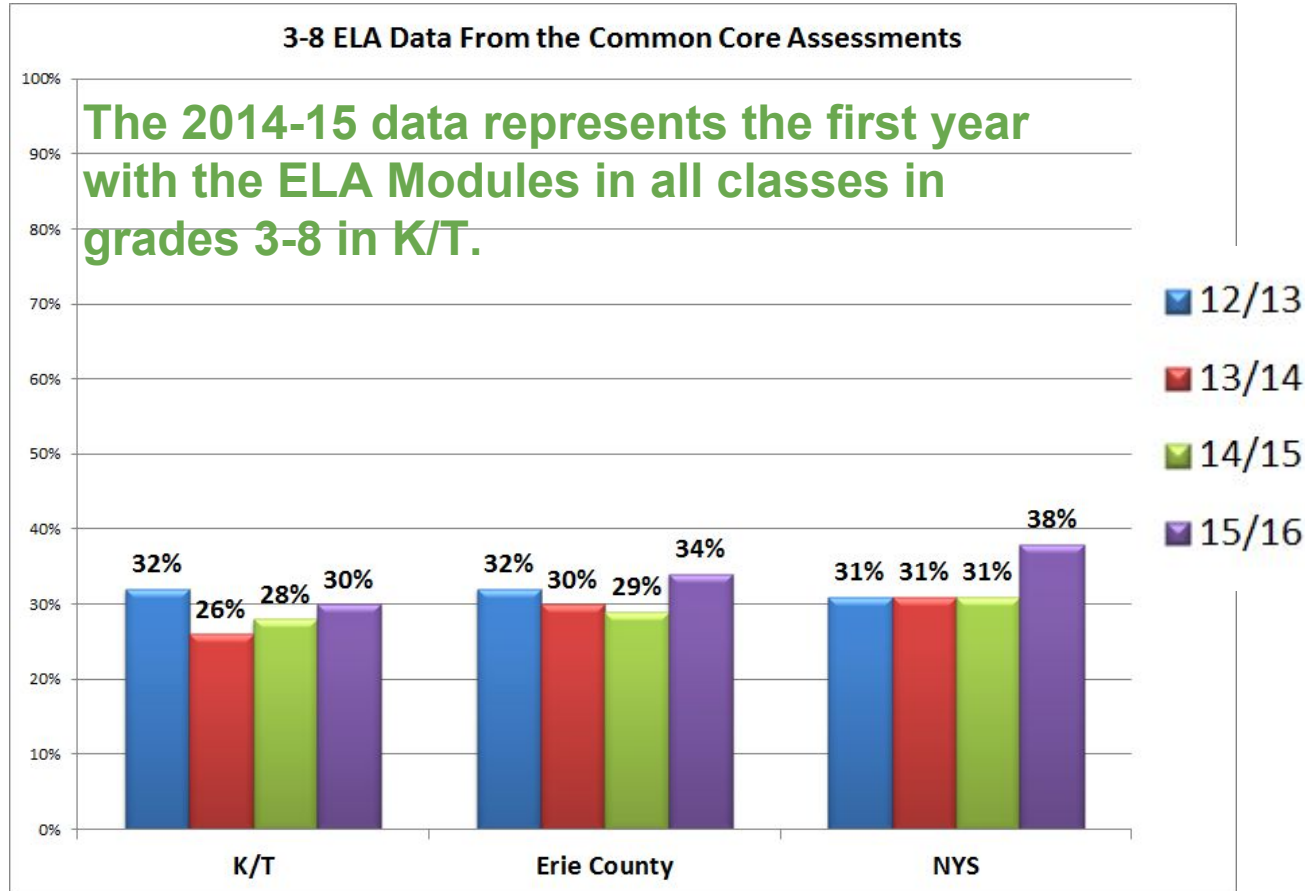
Student Outcomes Pre/Post Modules



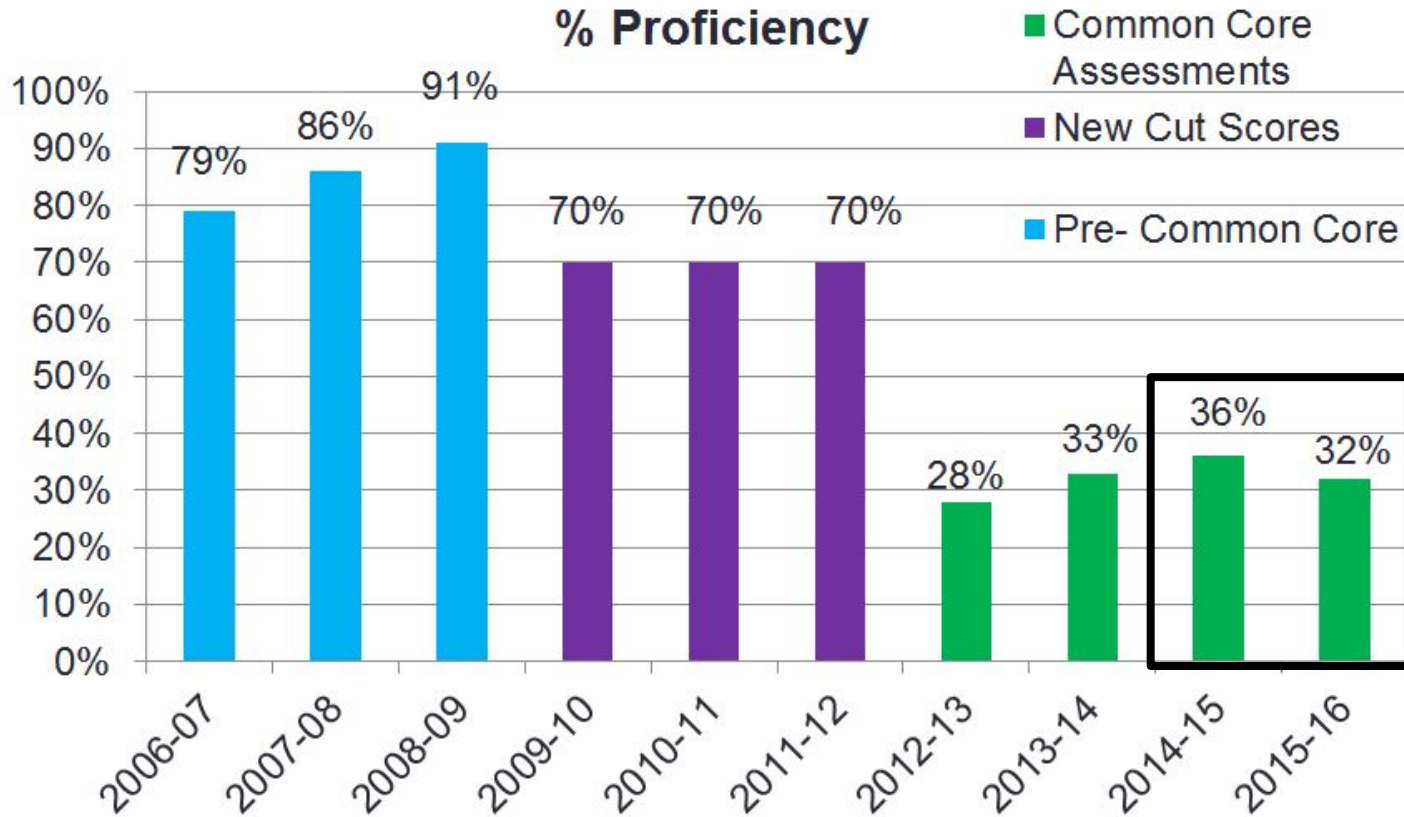
Student Outcomes - ELA



Student Outcomes - ELA

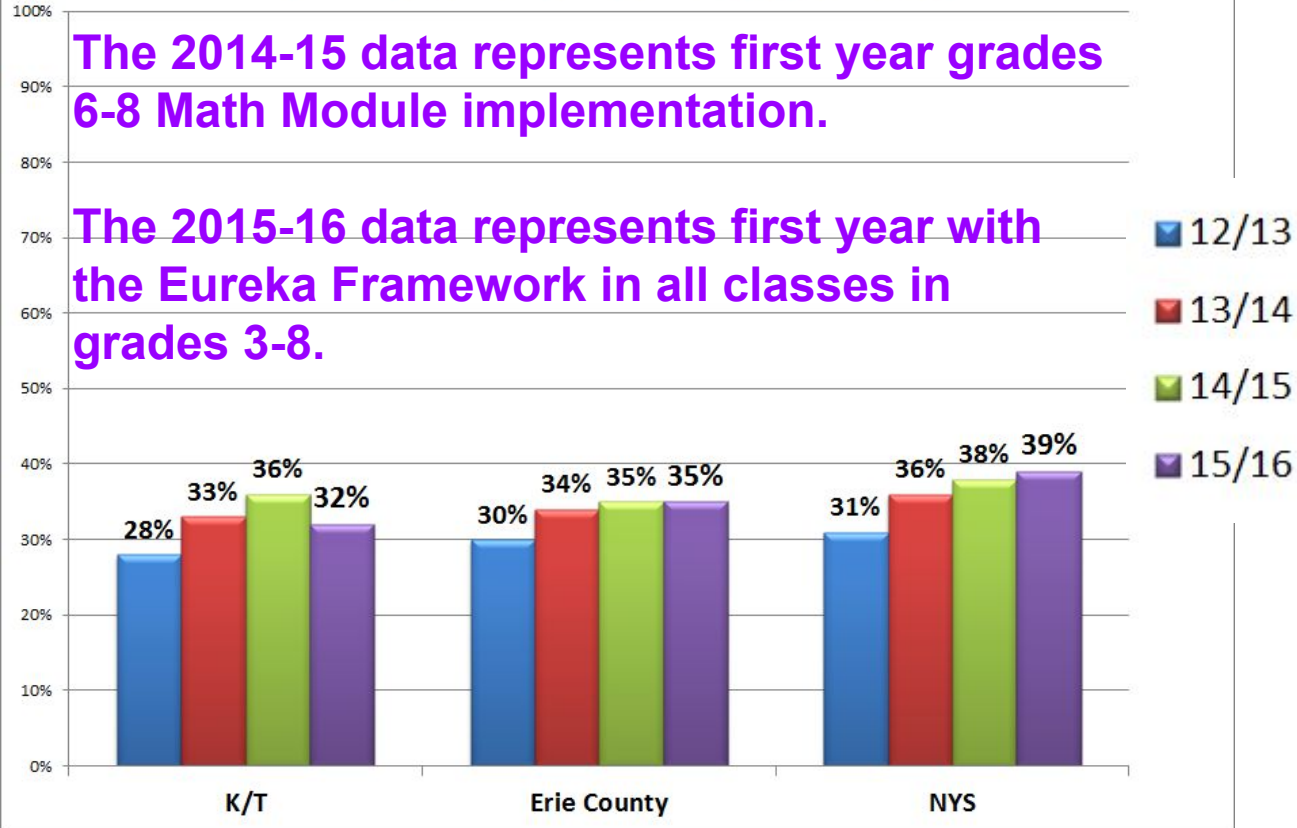


Student Outcomes - Math



Student Outcomes - Math

3-8 Math Data From the Common Core Assessments



Third Area of Inquiry

Timing of Communication



Fourth Area of Inquiry

Practicality of Module Customization



Practicality of Customization

In order to meet the needs of all students, customizing curriculum is the teacher's way of:

- Thoughtfully planning
- Instructing to bridge the gap between where students are and where they need to go

Practicality of Customization

Assessments and Customization:

- The common assessments create a common “destination.” Teachers can customize the “vehicle” used to get students to that “destination.”
- Common assessments do not restrict customization; common assessments ensure that curricular and instructional customization yield the same high quality outcomes.

Practicality of Customization

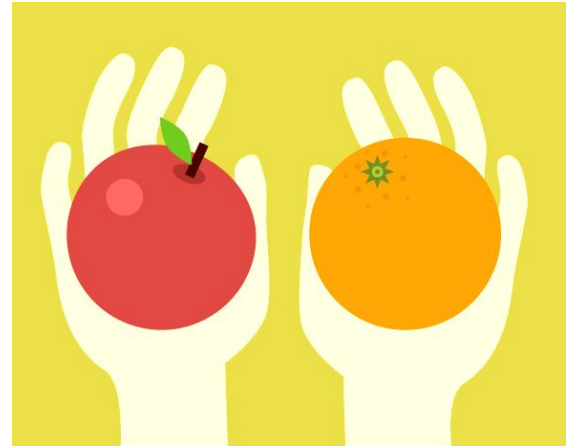
Customization is supported and has been occurring

Some examples include:

1. Winter 2015-16:
 - Middle School ELA Teachers revised the module units and assessments
2. Summer 2016:
 - Math COII work to improve the assessments K-5
3. 2015/16 and 2016/17 School Years:
 - Professional Development from Expeditionary Learning (ELA), Great Minds (Math), and Instructional Coaches (Math) on customization

Fifth Area of Inquiry

What Other Districts are
Doing



Comparisons

By the numbers...

- There are 19 districts in Erie 1 BOCES (including K/T)
- We reached out to all to ask what curriculum they use
- 16 districts responded to our requests to share what curriculum they are using and how it was created

Akron

Alden

Amherst

Cheektowaga
Sloan

Cleve Hill

Depew

Frontier

Grand Island

Hamburg

Lackwanna

Lancaster

Maryvale

Sweet Home

Tonawanda

West Seneca

Williamsville

Comparisons – ELA Module Use

Ken-Ton

- E: Yes*
- M: Yes*
- H: Yes*

Akron

- E: Yes*
- M: Yes*
- H: Yes*

Alden

- E: Yes*
- M: Yes*
- H: Yes*

Amherst

- E: Yes*
- M: Yes*
- H: Yes*

Cheektowaga Sloan

- E: No
- M: Yes*
- H: Yes*

Cleve Hill

- E: No
- M: No
- H: Yes*

Depew

- E: No
- M: Yes*
- H: Yes

Frontier

- E: No
- M: Yes*
- H: No

Grand Island

- E: No
- M: No
- H: No

Hamburg

- E: No
- M: Yes*
- H: No

Lackwanna

- E: No
- M: No
- H: No

Lancaster

- E: Yes*
- M: Yes*
- H: Yes*

Maryvale

- E: No
- M: No
- H: No

Sweet Home

- E: No
- M: No
- H: No

Tonawanda

- E: No
- M: No
- H: No

West Seneca

- E: No
- M: No
- H: N/A

Williamsville

- E: Yes*
- M: Yes*
- H: Yes*

Comparisons - Math Module Use

Ken-Ton

- E: Yes*
- M: Yes*
- H: Yes*

Akron

- E: Yes*
- M: Yes*
- H: Yes*

Alden

- E: Yes*
- M: Yes*
- H: Yes*

Amherst

- E: Yes*
- M: Yes*
- H: Yes*

Cheektowaga Sloan

- E: Yes*
- M: No
- H: No

Cleve Hill

- E: Yes*
- M: Yes*
- H: Yes*

Depew

- E: No
- M: No
- H: No

Frontier

- E: No
- M: No
- H: No

Grand Island

- E: Yes*
- M: Yes*
- H: Yes*

Hamburg

- E: No
- M: No
- H: Yes*

Lackwanna

- E: No
- M: No
- H: Yes*

Lancaster

- E: No
- M: Yes*
- H: Yes*

Maryvale

- E: Yes*
- M: Yes*
- H: Yes*

Sweet Home

- E: No
- M: No
- H: No

Tonawanda

- E: Yes*
- M: Yes*
- H: Yes*

West Seneca:

- E: No
- M: Yes*
- H: N/A

Williamsville

- E: Yes*
- M: No
- H: No

Comparisons - 2016 3-8 Assessments

Ken-Ton

- ELA: 30%
- Math: 32%

Akron

- ELA: 38%
- Math: 49%

Alden

- ELA: 43%
- Math: 47%

Amherst

- ELA: 52%
- Math: 53%

Cheektowaga Sloan

- ELA: 27%
- Math: 24%

Cleve Hill

- ELA: 42%
- Math: 43%

Depew

- ELA: 42%
- Math: 42%

Frontier

- ELA: 57%
- Math: 56%

Grand Island

- ELA: 47%
- Math: 53%

Hamburg

- ELA: 57%
- Math: 60%

Lackwanna

- ELA: 15%
- Math: 9%

Lancaster

- ELA: 47%
- Math: 53%

Maryvale

- ELA: 39%
- Math: 40%

Sweet Home

- ELA: 40%
- Math: 39%

Tonawanda

- ELA: 40%
- Math: 45%

West Seneca

- ELA: 38%
- Math: 40%

Williamsville

- ELA: 60%
- Math: 65%

Creating a Curriculum

Resources Needed for Curriculum Development



Thank You

QUESTIONS?

**KENMORE-TOWN OF TONAWANDA
UNION FREE SCHOOL DISTRICT**

1500 Colvin Blvd.
Buffalo, NY 14223
(716) 874-8400